


# eBee VISION

 Low acoustic signature

 Low specular reflection



## Real-time situational awareness UAS

Get HD live video insights into rapidly-changing environments, even in GNSS-denied conditions. Ensure the success of your Intelligence, Surveillance, and Reconnaissance (ISR) missions. eBee VISION can be easily carried, hand-launched and operated by a single pilot.

Light weight  
**4 lbs / 1.8 kg**

Deployment  
**3 min**

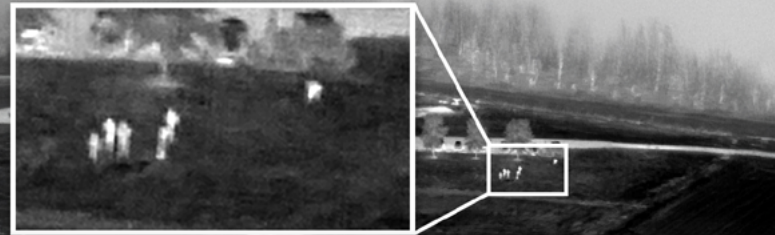
Flight time  
**Up to 90 min**

Wireless range  
**Up to 12 mi / 20 km**

Cyber-secure  
**AES-256 encryption**



RGB camera with 32x zoom



Thermal camera with 5x zoom

### Detect, track and geo-locate

Simultaneously capture, view and record HD video and imagery.



**Flight plan**  
Define a flight plan and seamlessly adapt it during the flight.



**Observation mode**  
Maintain observation from a safe distance.



**Scouting mode**  
Explore and track moving targets.



**Cursor-on-Target**  
Locate targets using image coordinates.



**Manual flight**  
Control the drone for your specific flight maneuvers.



**Mapping mode**  
Create circular or grid mapping patterns.



## Drone specifications

|                |                              |
|----------------|------------------------------|
| Wingspan       | 47.2 in / 120 cm             |
| Material       | Expanded Polypropylene (EPP) |
| Weight         | 4 lbs / 1.8 kg               |
| Transport case | Backpack and hardcase        |

## Flight performance

|                     |  |
|---------------------|--|
| Cruise speed        | 30 mph to 45 mph<br>(48.6 km/h or 13.5 m/s to 72 km/h or 20 m/s) |
| Max speed           | 50 mph (80 km/h or 22.5 m/s)                                     |
| Max wind resistance | 38 mph (61 km/h or 17 m/s)                                       |
| Max flight time     | 90 minutes   |
| Service temperature | 14°F, 120°F / -10°C, +49°C                                       |



Validated as  
cyber-secure



Radio data link  
encryption AES-256



Drone log file  
suppression



Protected by  
secure element



Encrypted  
SD card

eBee VISION is NDAA-compliant

## Remote controller specifications

|         |  |
|---------|--|
| Screen  | 7" sunlight viewable screen with rain mode and glove touch |
| Video   | Continuous HD video feed from RGB and thermal sensors      |
| Battery | 5 hours battery life with warm-swap capability             |

## RGB sensor specifications

|                       |  |
|-----------------------|--|
| Sensor                | 2 sensors 1/2.4"                       |
| Resolution            | 5344 x 4016                            |
| Focal length          | 4mm / 16mm                             |
| Field of view (H x V) | 72° x 45° / 21° x 12°                  |
| ISO range             | 100-3200                               |
| Zoom                  | 16x optical / 2x digital               |
| Video resolution      | 1920 x 1080 record / 1280 x 720 stream |
| Video format          | MPEG-TS (H.264)                        |

## Thermal sensor specifications

|                       |                              |
|-----------------------|------------------------------|
| Sensor                | FLIR BOSON                   |
| Resolution            | 640 x 512                    |
| Focal length          | 18mm                         |
| Field of view (H x V) | 24° x 19°                    |
| ISO range             | -                            |
| Zoom                  | 5x digital                   |
| Video resolution      | 1280 x 720 record and stream |
| Video format          | MPEG-TS (H.264)              |

## eBee VISION system includes



GCS



Radio module with  
short range antenna



Radio module  
auxiliary battery



Radio module  
auxiliary battery charger



2x Smart batteries



Smart charger



Backpack



Hardcase

SD card 64GB

1x Spare propeller

1x Spare pitot

